

Scaled data based on original data using

LM-41-14 Approved Method for Photometric Testing Of Indoor Fluorescent Luminaires

Test Report Prepared for

Cooper Lighting Solutions

(formerly Eaton)

Brand: NEO-RAY

Report Number: BALLABS TEST NO. 11923.0

Luminaire Tested: **194/1T5H0 S17B**

Issue Date: 3/3/2020

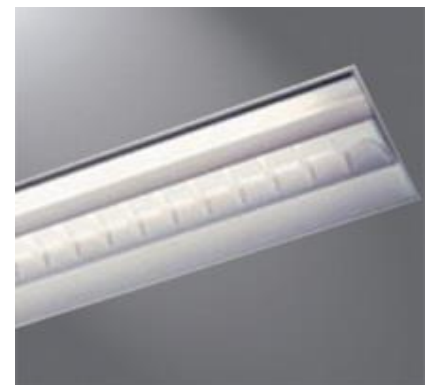
Test Information

Test Method: LM-41-14
Report Number: BALLABS TEST NO. 11923.0
Test Lab:
Issue Date: 3/3/2020
Manufacturer: COOPER LIGHTING SOLUTIONS (FORMERLY EATON)
Product Line: NEO-RAY
Catalog Number: 194/1T5H0 S17B
Description: 1/54W T5HO 1x4'RECESSED GRID MNT LUMINAIRE w/WHITE REFL
Light Source: -
FP54WT5HO/835
Ballast/Driver: SYLVANIA BALLAST #QT1x54120PHO WATTS=60 REFL=94%

Summary

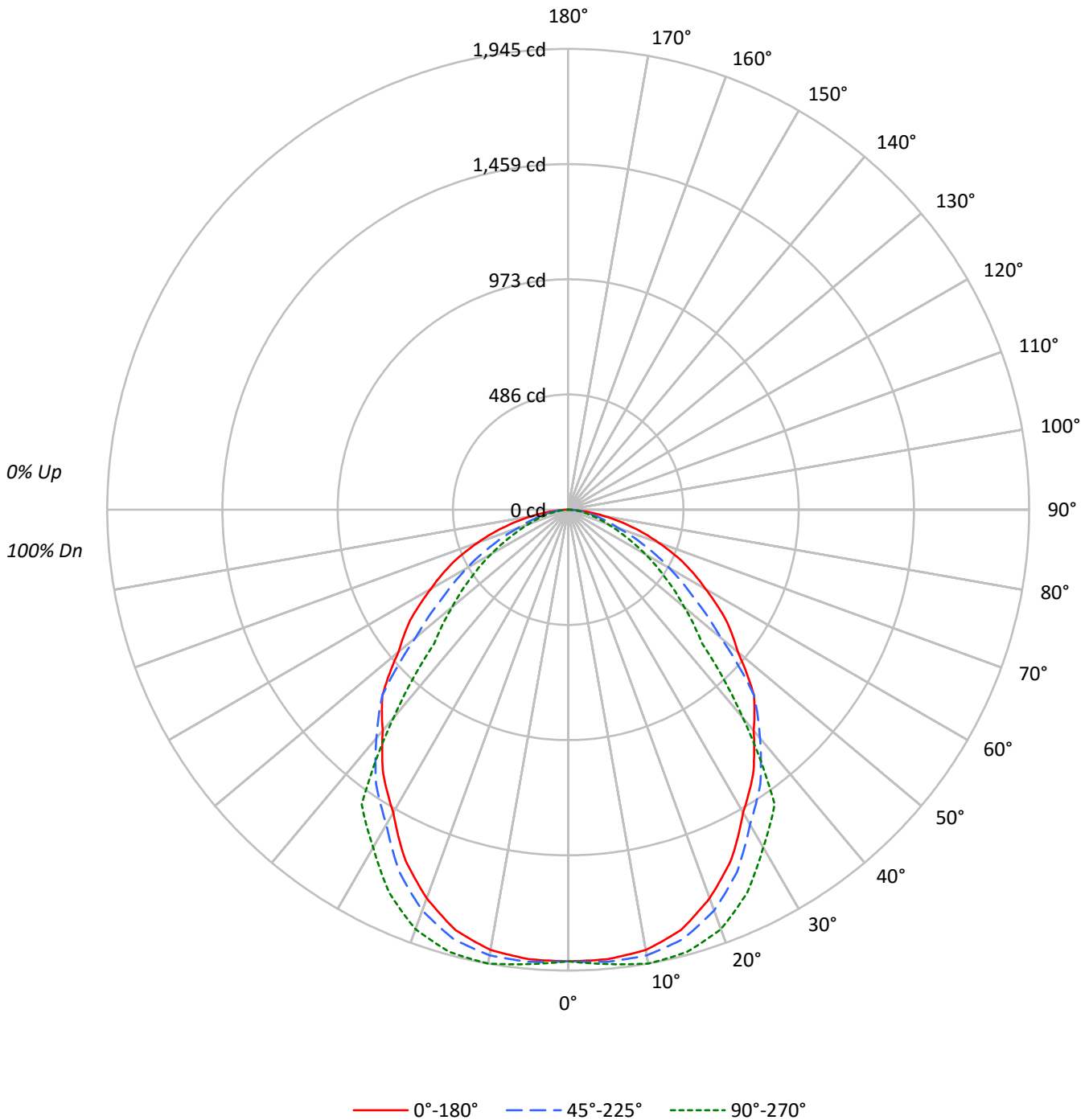
Lumens per Lamp: 5000 (1 lamp)
Luminaire Lumens: 4349.4 lumens
Efficiency: 87.0%
Efficacy: 72.5 lumens/watt
Spacing Criteria (0/90/45): 1.16 / 1.27 / 1.29
Luminous Opening: Rectangular (W 0.9' x L: 3.92' x H: 0')
CIE Type: Direct

Input Watts (W): 60
Input Voltage (V): NR
Input Current (Ain): NR
Voltage Rise (V): NR
Power Factor: NR
Total Harmonic Distortion (THDi): NR
Frequency (hertz): 60
Stabilization Time: NR
Operation Time: NR
Ambient Temperature (°C): NR
Test Distance: 25 FT



TEST NUMBER: BALLABS TEST NO. 11923.0
CATALOG NUMBER: 194/1T5H0 S17B

Luminous Intensity Polar Plot





TEST NUMBER: BALLABS TEST NO. 11923.0
 CATALOG NUMBER: 194/1T5H0 S17B

COEFFICIENT OF UTILIZATION - ZONAL CAVITY METHOD:

RF	20				20				20				20				20	
RC	80				70				50				30				10	0
RW	70	50	30	10	70	50	30	10	50	30	10	50	30	10	50	30	10	0
RCR																		
0	104	104	104	104	101	101	101	101	97	97	97	93	93	93	89	89	89	87
1	96	92	89	86	93	90	87	84	86	84	82	83	81	79	80	78	77	75
2	88	82	76	72	86	80	75	71	77	73	69	74	71	68	72	69	66	64
3	81	73	66	61	79	71	65	60	69	64	59	66	62	58	64	61	57	56
4	75	65	58	53	73	64	57	52	62	56	52	60	55	51	58	54	50	49
5	69	59	51	46	67	58	51	46	56	50	45	54	49	45	53	48	44	43
6	64	53	46	41	62	52	46	41	51	45	40	49	44	40	48	43	40	38
7	60	49	41	36	58	48	41	36	47	40	36	45	40	36	44	39	35	34
8	56	45	38	33	54	44	37	33	43	37	32	42	36	32	41	36	32	30
9	52	41	34	30	51	41	34	30	40	34	29	39	33	29	38	33	29	28
10	49	38	31	27	48	38	31	27	37	31	27	36	31	27	35	30	27	25

AVERAGE LUMINANCE (cd/sqm):

	0°	45°	90°
0°	5846	5846	5846
5°	5862	5896	5926
10°	5877	5948	6057
15°	5833	5953	6138
20°	5695	5875	6149
25°	5513	5705	6040
30°	5227	5433	5829
35°	5096	5290	5687
40°	4876	5041	4592
45°	4810	4810	3466
50°	4461	4013	3049
55°	4353	3454	2679
60°	4104	3030	2306
65°	3948	2554	1909
70°	3632	2018	1578
75°	3259	1730	1339
80°	2720	1466	1130
85°	2006	1302	950



TEST NUMBER: BALLABS TEST NO. 11923.0
 CATALOG NUMBER: 194/1T5H0 S17B

ZONAL LUMENS:

Zone	Lumens	% Fixture	% Lamp
0°-10°	182.6	4.2	3.7
10°-20°	528.7	12.2	10.6
20°-30°	777.1	17.9	15.5
30°-40°	879.7	20.2	17.6
40°-50°	784.6	18.0	15.7
50°-60°	588.7	13.5	11.8
60°-70°	381.0	8.8	7.6
70°-80°	181.5	4.2	3.6
80°-90°	45.5	1.0	0.9
90°-100°	0.0	0.0	0.0
100°-110°	0.0	0.0	0.0
110°-120°	0.0	0.0	0.0
120°-130°	0.0	0.0	0.0
130°-140°	0.0	0.0	0.0
140°-150°	0.0	0.0	0.0
150°-160°	0.0	0.0	0.0
160°-170°	0.0	0.0	0.0
170°-180°	0.0	0.0	0.0
0°-30°	1488.4	34.2	29.8
0°-40°	2368.1	54.4	47.4
0°-60°	3741.4	86.0	74.8
0°-90°	4349.4	100.0	87.0
90°-120°	0.0	0.0	0.0
90°-150°	0.0	0.0	0.0
90°-180°	0.0	0.0	0.0
0°-180°	4349.4	100.0	87.0

CANDELA DISTRIBUTION:

	0°	22.5°	45°	67.5°	90°	Flux
0°	1906	1906	1906	1906	1906	
5°	1904	1906	1915	1922	1925	181
15°	1837	1848	1875	1910	1933	516
25°	1629	1647	1686	1736	1785	747
35°	1361	1381	1413	1476	1519	848
45°	1109	1126	1109	890	799	844
55°	814	785	646	535	501	723
65°	544	503	352	273	263	535
75°	275	205	146	123	113	293
85°	57	43	37	28	27	73
90°	0	0	0	0	0	



TEST NUMBER: BALLABS TEST NO. 11923.0

CATALOG NUMBER: 194/1T5H0 S17B

CANDELA DISTRIBUTION (FULL):

	0°	22.5°	45°	67.5°	90°
0°	1906	1906	1906	1906	1906
5°	1904	1906	1915	1922	1925
10°	1887	1892	1910	1934	1945
15°	1837	1848	1875	1910	1933
20°	1745	1763	1800	1847	1884
25°	1629	1647	1686	1736	1785
30°	1476	1496	1534	1591	1646
35°	1361	1381	1413	1476	1519
40°	1218	1239	1259	1204	1147
45°	1109	1126	1109	890	799
50°	935	934	841	677	639
55°	814	785	646	535	501
60°	669	637	494	396	376
65°	544	503	352	273	263
70°	405	347	225	187	176
75°	275	205	146	123	113
80°	154	105	83	71	64
85°	57	43	37	28	27
90°	0	0	0	0	0

(END OF REPORT)