

Scaled data based on original data using
LM-79-08 Approved Method: Electrical and Photometric Measurements of Solid-State
Lighting Products

Test Report Prepared for
Cooper Lighting Solutions
(formerly Eaton)

Brand: FAILSAFE

Report Number: 104416213CRT-002

Luminaire Tested: **GAW-2-1GUV20W-UNV-R1-W**

Issue Date: 11/02/2020

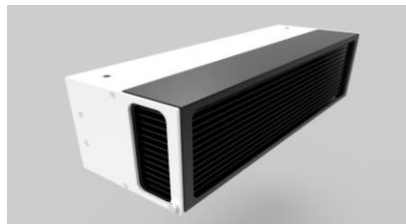
Test Information

Test Method: LM-79-08
Report Number: 104416213CRT-002
The data set was measured in RADIOMETRIC UNITS.
Test Lab: Intertek Cortland
Issue Date: 11/02/2020
Manufacturer: COOPER LIGHTING SOLUTIONS (FORMERLY EATON)
Product Line: FAILSAFE
Catalog Number: GAW-2-1GUV20W-UNV-R1-W
Description: Germicidal UV Disinfection 2 ft UV 1 LAMP LUMINAIRE
Light Source: (1) Philips TUV 20W T5
Ballast/Driver: -

Summary

Output per Lamp: N/A
Luminaire UV Output: 556.4 mW
Efficiency: N/A
UV Efficacy: 29.3 UV mW/watt
Spacing Criteria (0/90/45): - / - / -
Luminous Opening: Rectangular w/ Sides (W: 1.65' x L: 0.46' x H: 0.12')
CIE Type: Indirect

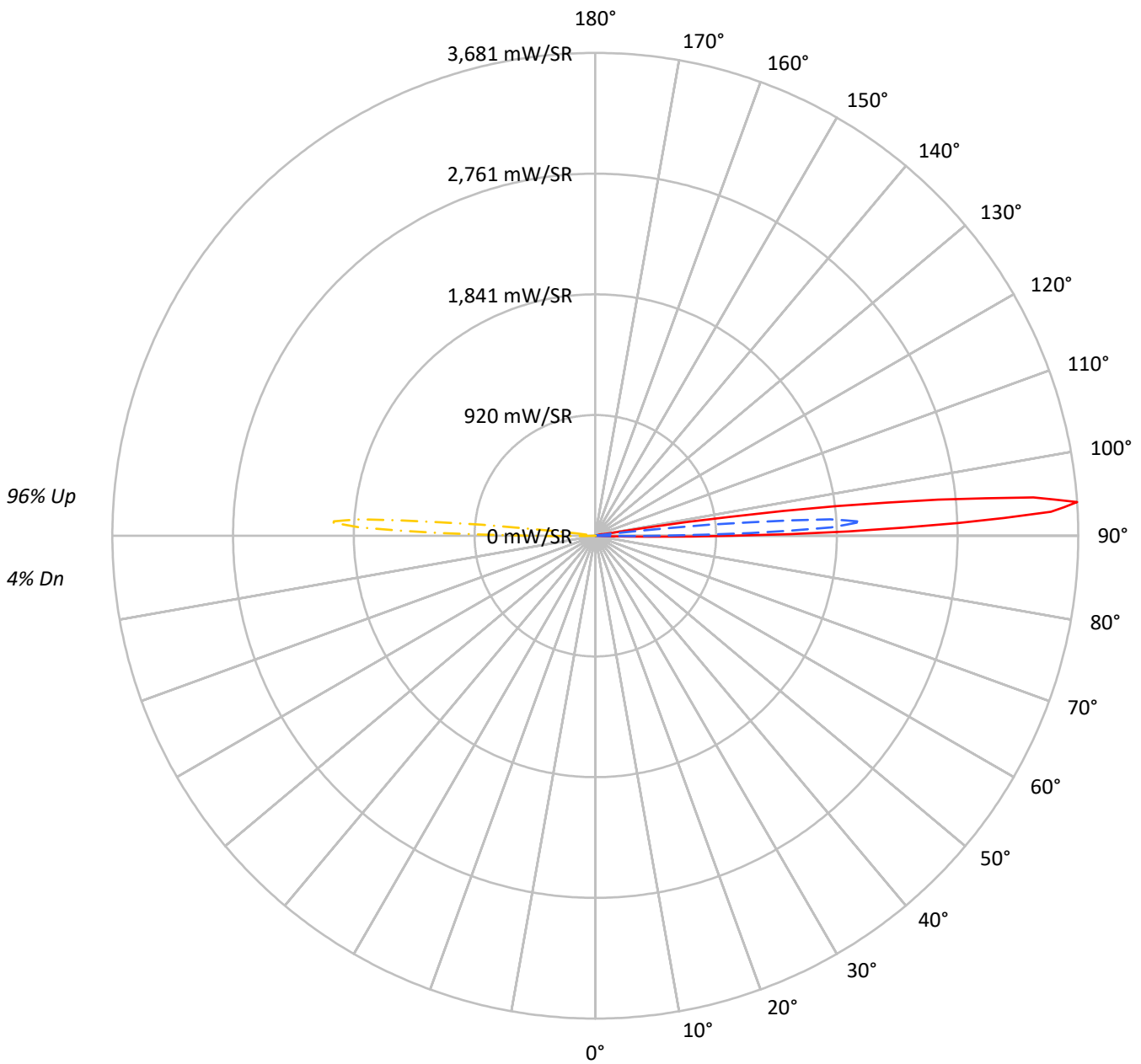
Input Watts (W): 18.99
Input Voltage (V): NR
Input Current (Ain): NR
Voltage Rise (V): NR
Power Factor: NR
Total Harmonic Distortion (THDi): NR
Frequency (hertz): 60
Stabilization Time: NR
Operation Time: NR
Ambient Temperature (°C): NR
Test Distance: 6.8 FT



TEST NUMBER: 104416213CRT-002

CATALOG NUMBER: GAW-2-1GUV20W-UNV-R1-W

Intensity Polar Plot



— 0°-180° - - 45°-225° - - - 90°-270° - - - 135°-315°



TEST NUMBER: 104416213CRT-002

CATALOG NUMBER: GAW-2-1GUV20W-UNV-R1-W

COEFFICIENT OF UTILIZATION - ZONAL CAVITY METHOD:

RF	20				20				20				20				20	
RC	80				70				50				30				10	0
RW	70	50	30	10	70	50	30	10	50	30	10	50	30	10	50	30	10	0
RCR																		
0	96	96	96	96	83	83	83	83	58	58	58	35	35	35	14	14	14	4
1	86	81	77	73	74	70	66	63	48	46	44	28	27	26	10	9	9	1
2	78	71	65	59	67	61	56	51	42	39	36	25	23	21	9	8	7	0
3	71	62	55	49	61	53	47	43	37	33	30	22	20	18	8	7	6	0
4	65	55	47	41	55	47	41	36	33	29	25	19	17	15	7	6	5	0
5	59	48	41	35	51	42	35	30	29	25	22	17	15	13	6	5	4	0
6	54	43	35	30	46	37	31	26	26	22	18	15	13	11	5	4	4	0
7	50	39	31	26	43	33	27	23	23	19	16	14	11	10	5	4	3	0
8	46	35	27	22	40	30	24	20	21	17	14	12	10	8	5	4	3	0
9	43	31	24	20	37	27	21	17	19	15	12	11	9	7	4	3	2	0
10	40	29	22	17	34	25	19	15	17	13	11	10	8	6	4	3	2	0

AVERAGE LUMINANCE (mW/SR/sqm):

	0°	90°	180°	270°
0°	0	0	0	0
5°	0	0	0	0
10°	0	0	0	0
15°	0	0	0	0
20°	0	0	0	0
25°	0	0	0	0
30°	0	0	0	0
35°	0	0	0	0
40°	0	0	0	0
45°	0	0	0	0
50°	0	0	0	0
55°	0	0	0	0
60°	0	0	0	0
65°	0	0	0	0
70°	0	0	0	0
75°	0	0	0	0
80°	0	0	0	0
85°	163	0	0	0



TEST NUMBER: 104416213CRT-002
 CATALOG NUMBER: GAW-2-1GUV20W-UNV-R1-W

ZONAL OUTPUT:

Zone	Lumens	% Fixture
0°-10°	0.0	0.0
10°-20°	0.0	0.0
20°-30°	0.0	0.0
30°-40°	0.0	0.0
40°-50°	0.0	0.0
50°-60°	0.0	0.0
60°-70°	0.0	0.0
70°-80°	0.0	0.0
80°-90°	24.9	4.5
90°-100°	527.3	94.8
100°-110°	4.2	0.8
110°-120°	0.0	0.0
120°-130°	0.0	0.0
130°-140°	0.0	0.0
140°-150°	0.0	0.0
150°-160°	0.0	0.0
160°-170°	0.0	0.0
170°-180°	0.0	0.0
0°-30°	0.0	0.0
0°-40°	0.0	0.0
0°-60°	0.0	0.0
0°-90°	24.9	4.5
90°-120°	531.5	95.5
90°-150°	531.5	95.5
90°-180°	532.0	95.6
0°-180°	556.4	100.0

INTENSITY DISTRIBUTION:

	0°	90°	180°	270°	360°	Flux
0°	0	0	0	0	0	
5°	0	0	0	0	0	0
15°	0	0	0	0	0	0
25°	0	0	0	0	0	0
35°	0	0	0	0	0	0
45°	0	0	0	0	0	0
55°	0	0	0	0	0	0
65°	0	0	0	0	0	0
75°	0	0	0	0	0	0
85°	4	0	0	0	4	4
90°	1041	0	0	0	1041	699
95°	3351	0	0	0	3351	1771
105°	39	0	0	0	39	41
115°	0	0	0	0	0	0
125°	0	0	0	0	0	0
135°	0	0	0	0	0	0
145°	0	0	0	0	0	0
155°	0	0	0	0	0	0
165°	0	0	0	0	0	0
175°	0	0	0	0	0	0
180°	0	0	0	0	0	



TEST NUMBER: 104416213CRT-002

CATALOG NUMBER: GAW-2-1GUV20W-UNV-R1-W

INTENSITY DISTRIBUTION (FULL):

	0°	22.5°	45°	67.5°	90°	112.5°	135°	157.5°	180°	202.5°	225°
0°	0	0	0	0	0	0	0	0	0	0	0
10°	0	0	0	0	0	0	0	0	0	0	0
20°	0	0	0	0	0	0	0	0	0	0	0
30°	0	0	0	0	0	0	0	0	0	0	0
40°	0	0	0	0	0	0	0	0	0	0	0
50°	0	0	0	0	0	0	0	0	0	0	0
60°	0	0	0	0	0	0	0	0	0	0	0
70°	0	0	0	0	0	0	0	0	0	0	0
80°	0	0	0	0	0	0	0	0	0	0	0
81°	0	0	0	0	0	0	0	0	0	0	0
82°	0	0	0	0	0	0	0	0	0	0	0
83°	1	1	0	0	0	0	0	0	0	0	0
84°	2	2	0	0	0	0	0	0	0	0	0
85°	4	4	1	0	0	0	0	0	0	0	0
86°	7	8	3	0	0	0	0	0	0	0	0
87°	12	12	5	0	0	0	0	0	0	0	0
88°	99	65	14	0	0	0	0	0	0	0	0
89°	415	317	140	4	0	0	0	0	0	0	0
90°	1041	879	499	36	0	0	0	0	0	0	0
91°	1927	1743	1183	108	0	0	0	0	0	0	0
92°	2762	2567	1798	131	0	0	0	0	0	0	0
93°	3478	3209	2031	103	0	0	0	0	0	0	0
94°	3681	3294	1794	35	0	0	0	0	0	0	0
95°	3351	2888	1189	6	0	0	0	0	0	0	0
96°	2626	2129	553	5	0	0	0	0	0	0	0
97°	1853	1347	147	4	0	0	0	0	0	0	0
98°	1034	577	16	4	0	0	0	0	0	0	0
99°	379	157	10	3	0	0	0	0	0	0	0
100°	78	15	8	2	0	0	0	0	0	0	0
110°	0	0	0	0	0	0	0	0	0	0	0
120°	0	0	0	0	0	0	0	0	0	0	0
130°	0	0	0	0	0	0	0	0	0	0	0
140°	0	0	0	0	0	0	0	0	0	0	0
150°	0	0	0	0	0	0	0	0	0	0	0
160°	0	0	0	0	0	0	0	0	0	0	0
170°	0	0	0	0	0	0	0	0	0	0	0
180°	0	0	0	0	0	0	0	0	0	0	0



TEST NUMBER: 104416213CRT-002

CATALOG NUMBER: GAW-2-1GUV20W-UNV-R1-W

INTENSITY DISTRIBUTION (continued):

	247.5°	270°	292.5°	315°	337.5°	360°
0°	0	0	0	0	0	0
10°	0	0	0	0	0	0
20°	0	0	0	0	0	0
30°	0	0	0	0	0	0
40°	0	0	0	0	0	0
50°	0	0	0	0	0	0
60°	0	0	0	0	0	0
70°	0	0	0	0	0	0
80°	0	0	0	0	0	0
81°	0	0	0	0	0	0
82°	0	0	0	0	0	0
83°	0	0	0	0	1	1
84°	0	0	0	0	2	2
85°	0	0	0	1	4	4
86°	0	0	0	3	8	7
87°	0	0	0	5	12	12
88°	0	0	0	14	65	99
89°	0	0	4	140	317	415
90°	0	0	36	499	879	1041
91°	0	0	108	1183	1743	1927
92°	0	0	131	1798	2567	2762
93°	0	0	103	2031	3209	3478
94°	0	0	35	1794	3294	3681
95°	0	0	6	1189	2888	3351
96°	0	0	5	553	2129	2626
97°	0	0	4	147	1347	1853
98°	0	0	4	16	577	1034
99°	0	0	3	10	157	379
100°	0	0	2	8	15	78
110°	0	0	0	0	0	0
120°	0	0	0	0	0	0
130°	0	0	0	0	0	0
140°	0	0	0	0	0	0
150°	0	0	0	0	0	0
160°	0	0	0	0	0	0
170°	0	0	0	0	0	0
180°	0	0	0	0	0	0

(END OF REPORT)